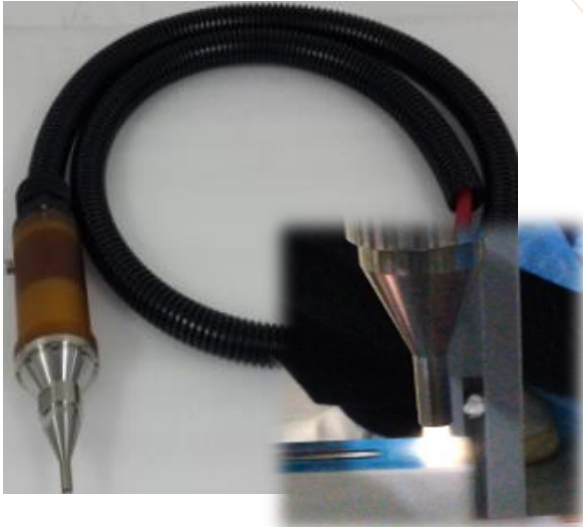


Air-Jet Plasma Module

[AJ-03]



Air-Jet Plasma module is a spot type In-line cleaning tool to improve adhesion property on Glass, Polymer layers and Plastic substrates.

Features

1. Very stable and high intensity plasma to remove organic contaminants effectively.
2. High treatment speed (up to ~ 200mm/sec)
3. No thermal (Process temp: ~60° at 100mm/sec) damage and no electrical damage.

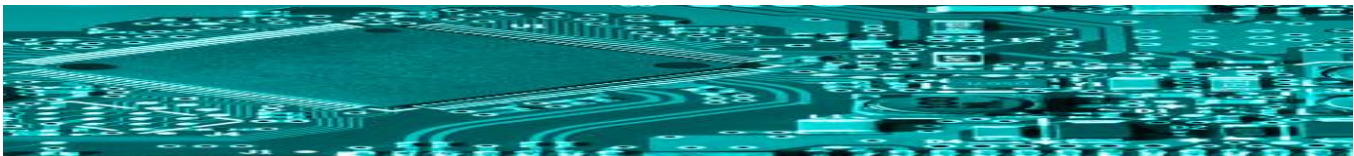
Applications

Air-Jet Plasma Module can be effectively used to remove organic contaminants and provide hydrophilic property on Glass, Plastics, Polymer, and Rubber substrates.

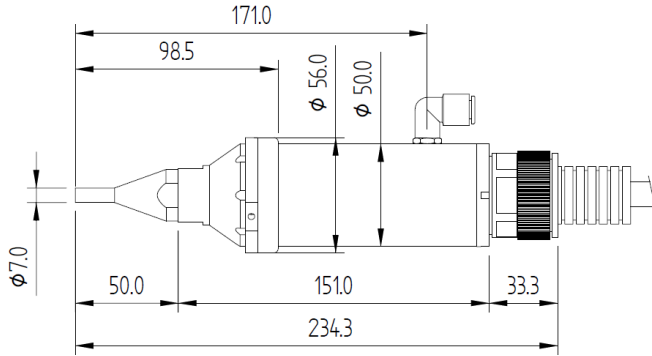
- LCD Module
- Touch Screen Module
- Smart Phone Case
- Automobile Parts
- Battery Connector Assembly
- Pre-treatments for COG, COF, FOG, ACF Bonding Process

General Specifications

- Treatment Effect
Contact Angle : < 5° at 200mm/s
- Process Gap : ~10 mm
- Plasma Spot size: ~10mm
- Process temperature:
70~120°C using CDA
40~60 °C using N2 at 100mm/sec
- Output Power : 150-500W
- Gas Interlock System
- No Noise issue (Noise Filter)
- Utility Box including moisture filter and Regulator (Option)
- 3 Axis Gantry Stage (Option)



Specifications



Air-Jet Plasma Module



1KW Power Supply (Gas Utility 포함)

Power Supply & Electricity

입력 전원	정격 전압	1 Phase AC 220V±10%
	주파수	50/60Hz
출력 전원	출력 전력	200~500W (Max: 1kw)
	주파수	25~30kHz
	출력 전압	7~12kVp

Hook-Up Utility

Utility	Specification	Q'ty	Remark
CDA	In $\Phi 10$ / Out $\Phi 8$, 10~100 SLM, 4~5 kgf/cm ²	1 EA	재질 : 우레탄 One-Touch Type
MF POWER	AC220V±10%, 1 KVA	1 EA	E1 (10 Ω 이하)